

## compact

The «Compact» air handling units are intended to provide ventilation and air conditioning of small rooms: apartments, cottages, different stores, offices, workshops, etc. Its packaged sound- and heat-insulated casing (the insulation thickness is 25 mm) comprises a filter, a fan and a heater (water or electrical). The air handling unit is supplied with a damper and a flexible insert. The unit can be produced in two sizes with different executions according to the fan capacity and the heater power. The units are equipped with EU3 filters. All the fans inside the unit are provided with sealed bearings-mounted external rotor induction motors to increase their lifetime.

### Speed and Temperature Control

The fan speed of the unit is controlled within the range of 0 - 100% by changing applied voltage. This is achieved using triac regulator or 5-step transformer. It is possible to connect several fans (e.g., the unit fan and the exhaust fan) to one regulator or transformer provided that the total operating current of the fans does not exceed the rated current of the triac or transformer. In order to control the supply air temperature at the outlet of units with electrical heaters, depending on the heater power, it is recommended to use triac temperature regulators. Regarding the units with water heaters, it is necessary to provide typical connections assembly complete with control equipment. These units can also be supplied with standard control modules ACM.



### The Motor and Heater Protection

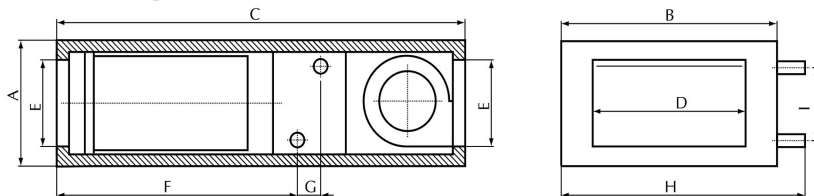
All the motors are protected by built-in thermal contacts with automatic reset. The electrical heaters of the unit are fitted with two-step overheat protection. The first step is adjusted for 7°C and is reset automatically, the second step is adjusted for 1 2°C and is reset manually. As for water heaters, it is necessary to provide the heat exchanger frost protection according to return water temperature and outlet air temperature of the heat exchanger.



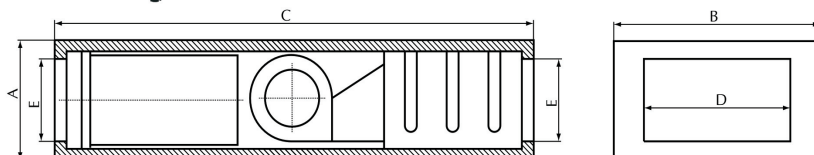
### Accessories

Speed regulators, temperature regulators, silencers, air distribution and protection grilles, control modules, etc.

### Air Handling Units with Water Heater



### Air Handling Units with Electrical Heater



## Technical data

Unit size	Airflow, m <sup>3</sup> /h	Heater Input, W	Fan Input, W	Voltage, V
Compact 1106	1050	6000	300	400/3
Compact 1109	1050	9000	300	400/3
Compact 1112	1050	12000	300	400/3
Compact 2109	2000	9000	600	400/3
Compact 2112	2000	12000	600	400/3
Compact 2117	2000	17000	600	400/3
Compact 2127	2000	27000	600	400/3
Compact 11W2	1050	14100	300	230/1
Compact 21W2	2000	25400	600	230/1

## Dimensional data, mm

Unit size	A	B	C	D	E	F	G	H	I
Compact 1106	320	570	1300	400	200				
Compact 1109	320	570	1300	400	200				
Compact 1112	320	570	1300	400	200				
Compact 2109	390	664	1400	500	250				
Compact 2112	390	664	1400	500	250				
Compact 2117	390	664	1400	500	250				
Compact 2127	390	664	1400	500	250				
Compact 11W2	320	570	1300	400	200	250	60	640	180
Compact 21W2	390	664	1400	500	250	360	60	752	205

